



Okanogan-Wenatchee National Forest

Fire Information



Wednesday, August 30, 2022 – 11 a.m.

Contact: Robin DeMario, 509-664-9292

Lightning Fire Update

A dozen new lightning-caused wildfires have occurred in the Okanogan-Wenatchee National Forest since August 29. Most of these fires were small, averaging a tenth to a quarter of an acre, with the largest at 20 acres. Following is a brief synopsis of each fire.

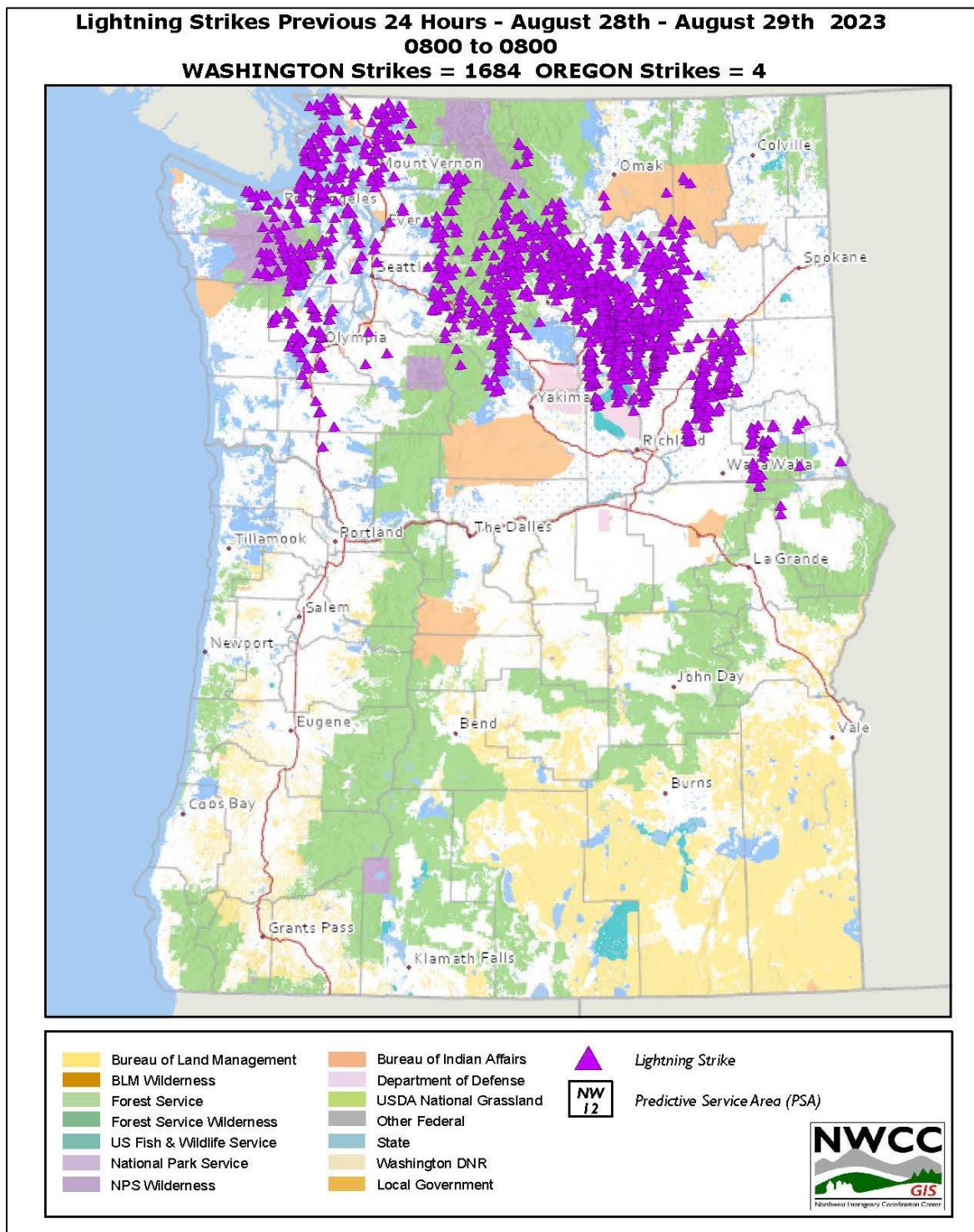
1. **Thompson Fire**, approximately 20 acres, a mile south of the Winton Mill near Coles Corner, WA. The fire is staffed with interagency personnel including fire engines, a bulldozer, and a 20-person crew which will arrive later today. See Chelan County Emergency Management <https://tinyurl.com/3why6d95> for information about the level 1 evacuation notification for the area east of Winton Mill on Highway 2.
2. **Natapoc Fire**, half an acre, is located a mile east of Coles Corner is contained.
3. **Martin Creek Fire**, a quarter acre, located 11 miles north of Twenty-Five Mile Creek State Park on Lake Chelan, is contained.
4. **Barney Zell Fire**, .2 acre, 4 miles west of Twenty-five Mile Creek State Park on Lake Chelan is contained.
5. **Libby Creek Fire**, 1/10 acre, located 6 miles northwest of Twenty-five Mile Creek State Park on Lake Chelan. Resources will staff the fire later today.
6. **Lake Creek Fire**, a quarter acre, located 10 miles west of Fields Point Landing on Lake Chelan, and is staffed with 10 smokejumpers.
7. **Safety Harbor Fire**, 1/10 acre, located in the Safety Harbor drainage on Lake Chelan. Smokejumpers will be sent to this incident later today.
8. **Windy Creek Fire**, a quarter acre, is located 6 miles northwest of Ardenvoir, WA. Crews will be hiking in to the fire this morning.
9. **Puckett Creek Fire**, 1/10 acre, 2 miles north of Carlton, WA is contained.
10. **Blue Buck Fire**, 1/10 acre, 7 miles southeast of Winthrop, WA is contained.
11. **Campbell Fire**, 1/10 acre, 7 miles southeast of Winthrop, WA is contained.
12. **Windy Point Fire**, 1/10 acre, 11 miles southwest of Naches, WA is contained.

Aerial detection flights will be occurring as needed over the next few days to scan the forest for holdover fires that were started by recent lightning storms. To report new fires, please call 911.

Please continue to do your part to reduce the risk of human-caused fires and follow campfire restrictions: https://www.fs.usda.gov/detail/okawen/alerts-notice/?cid=fsbdev3_053600 . Please remain diligent with fire prevention. Despite the cooler temperatures and rainfall, fire danger still exists.

Containment is the status of a wildfire suppression action signifying that a control line has been completed around the fire, and any associated spot fires, which can reasonably be expected to stop the fire's spread. A control line, also referred to as a containment line, is an inclusive term for all constructed or natural barriers and treated fire edges used to control a fire.

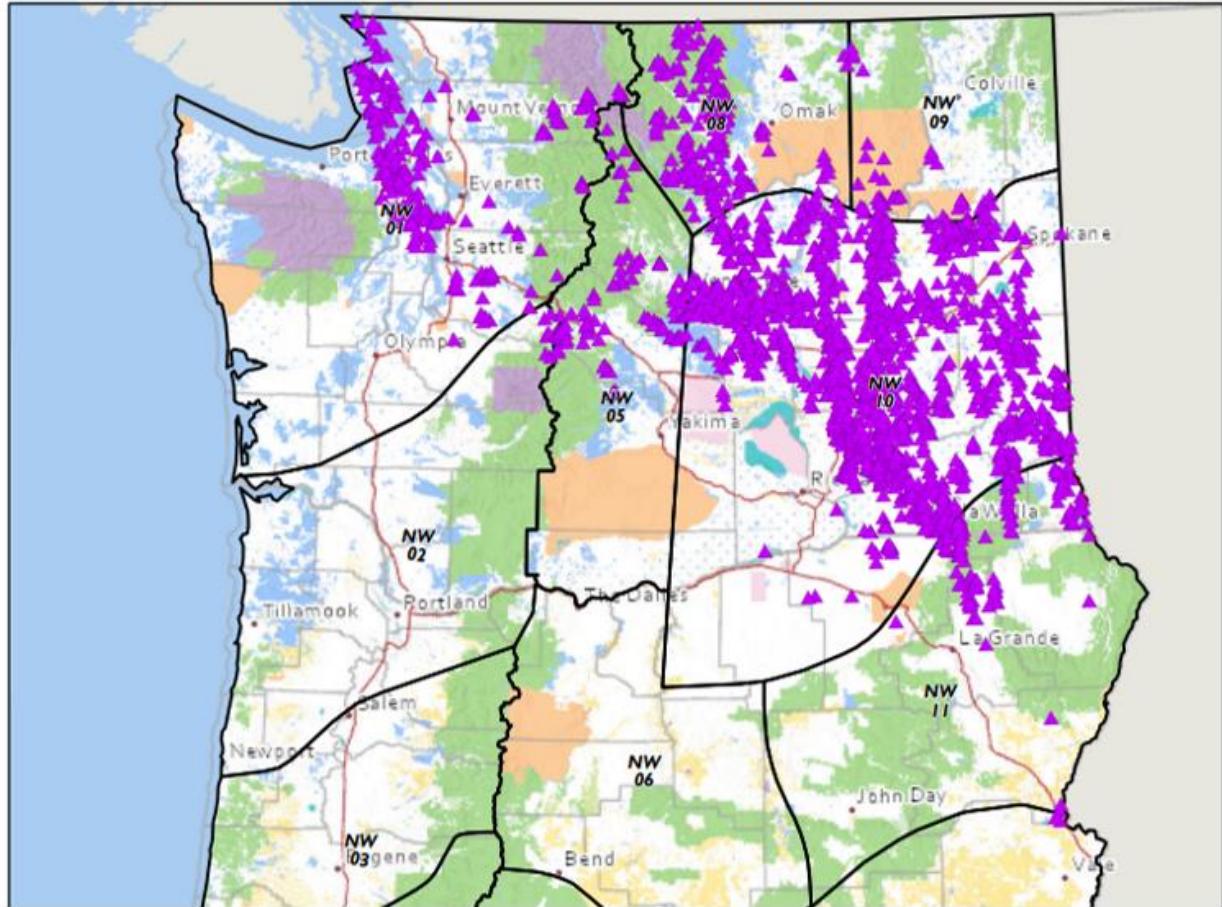
-End-



Lightning Strikes Previous 24 Hours - August 29th - August 30th 2023

0800 to 0800

WASHINGTON Strikes = 2349 OREGON Strikes = 76



Two maps showing lightning strikes that occurred in the region during August 28 to August 30, 2023.